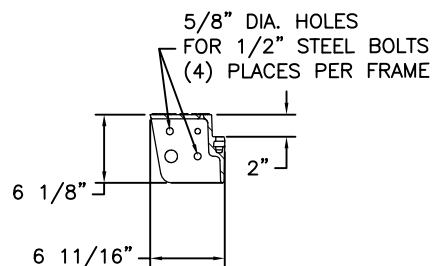
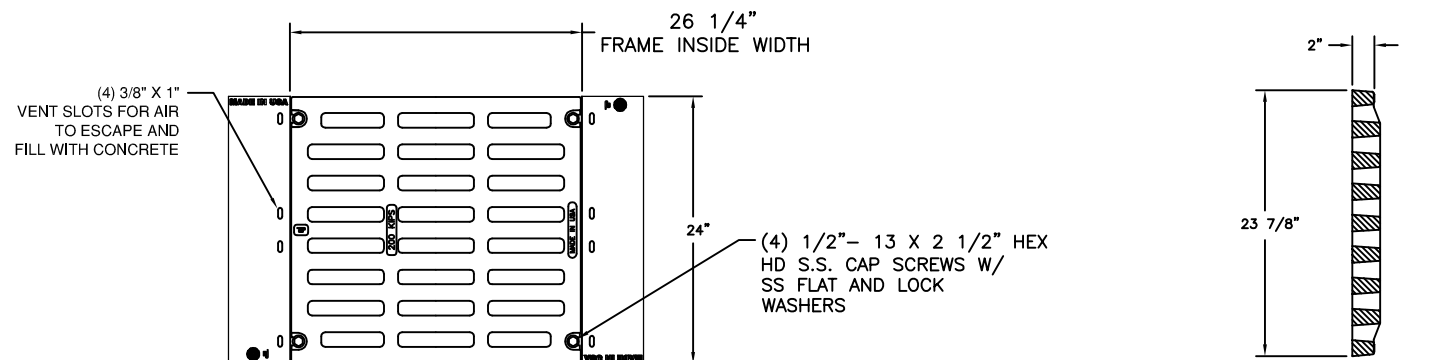


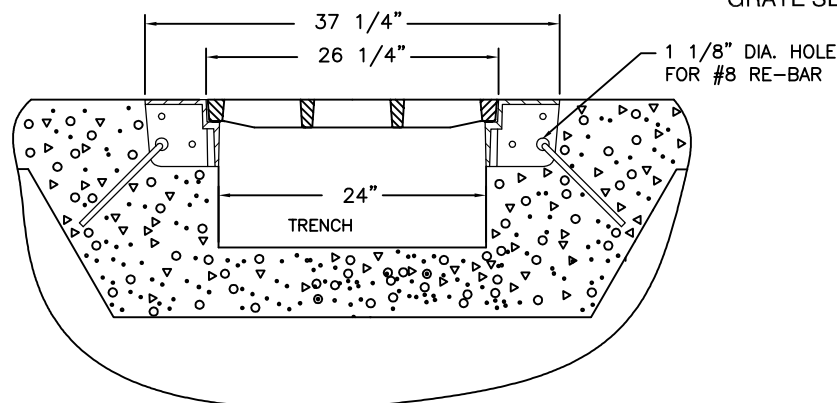
6900Z4 6908M4 Assembly

Supplied By:
**TRENCHDRAIN
SUPPLY**

877-903-7246
www.trenchdrainsupply.com



FRAME SECTION



GRATE SECTION

Product Number

00690855B01

Design Features

- Materials
 - Trench Rail
 - Gray Iron (CL35B)
 - Trench Grate
 - Ductile Iron (80-55-06)

-Design Load

Airport Extra Heavy Duty

-Open Area

408 sq in

-Coating

Double Dipped

-✓ Designates Machined Surface

Certification

-
- ASTM A48
- ASTM A536
- Country of Origin: USA

Major Components

00690012

00690855

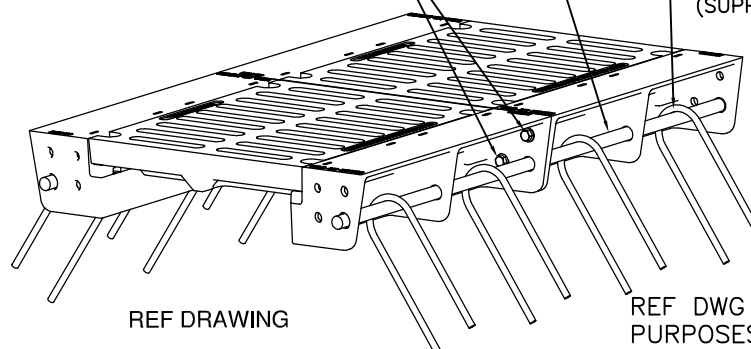
CAUTION:
DO NOT DISASSEMBLE BOLTED GRATES.
CHECK FRAME WIDTH INSIDE BEFORE
SETTING SECTIONS IN CONCRETE.

NOTE: PALLETIZE WITH WOOD BLOCKING SO GRATES ARE SUPPORTED AND STAY FLUSH AND PARALLEL WITH TOP SURFACES OF SIDE FRAMES. ENDS OF SIDE FRAMES MUST BE PARALLEL AND IN-LINE. GRATE MUST NOT EXTEND PAST ENDS OF SIDE FRAMES. GRATE MUST BE FLUSH OR BACK SLIGHTLY. CHECK BOTH ENDS OF ASSEMBLY WITH STRAIGHT EDGE. DOUBLE BAND PALLET, BOTH DIRECTIONS WITH HEAVY STEEL BANDING. DO NOT SHRINK WRAP.

5/8" STEEL BOLTS SHOULD BE FINGER
TIGHT TO KEEP FRAMES TRUE
(SUPPLIED BY OTHERS)

#8 RE-BAR
(SUPPLIED BY OTHERS)

#4 RE-BAR
(SUPPLIED BY OTHERS)



REF DRAWING

REF DWG FOR ASSEMBLY
PURPOSES ONLY
MAY NOT REPRESENT
ACTUAL GRATE LISTED.

Drawing Revision

5/14/2012 Designer: SBB

9/11/2014 Revised By: MAH

Disclaimer

Weights (lbs./kg) dimensions (inches/mm) and drawings provided for your guidance. We reserve the right to modify specifications without prior notice.

CONFIDENTIAL: This drawing is the property of EJ GROUP, Inc., and embodies confidential information, registered marks, patents, trade secret information, and/or know how that is the property of EJ GROUP, Inc. Copyright © 2012 EJ GROUP, Inc. All rights reserved.

Contact

800 626 4653
ejco.com